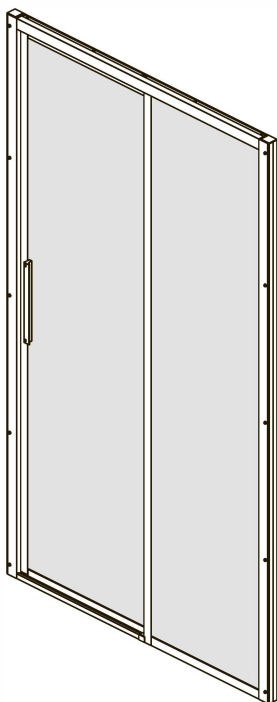
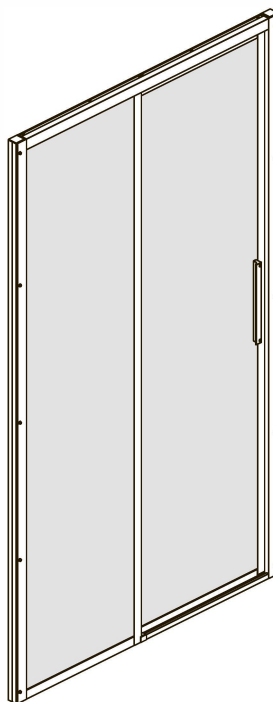




Lopau 32S05R, Lopau 32S05L
Video installation guide
Video-Montageanleitung
Видеоинструкция по монтажу

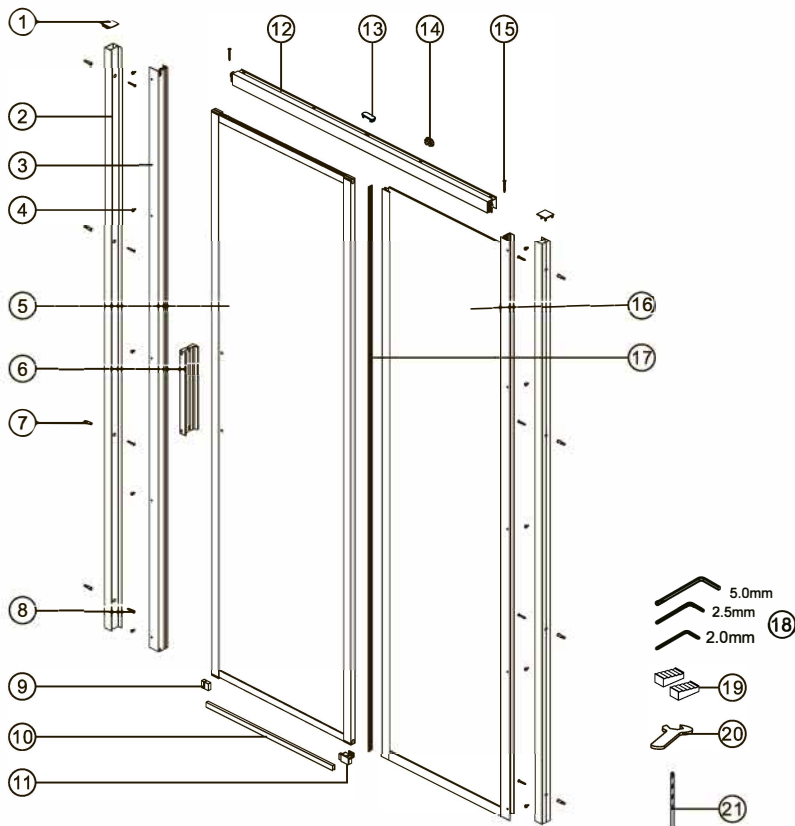


Lopau 32S05R



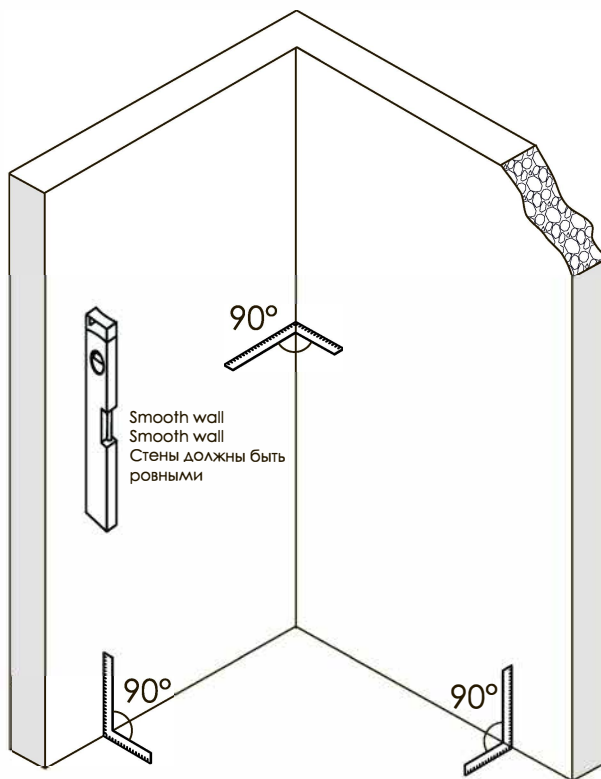
Lopau 32S05L

Detailization / Details / В комплект входит
Лопат 32S05L, Лопат 32S05R



NO	Qty	Description	NO	Qty	Description
1	2	Wall profile top cover	12	1	Rail
2	2	Wall profile	13	1	Rail cap 1
3	1	Magnet profile	14	1	Rail cap 2
4	10	Screw ST4X12	15	2	Screw ST3.5X30
5	1	Moving door	16	1	Fixed panel
6	1	Handle	17	1	Water retaining gasket
7	8	Wall anchor	18	3	Allan key
8	8	Screw ST4X30	19	2	Installation tool
9	1	Threshold bracket	20	1	Wrench
10	1	Threshold	21	1	Drill bit
11	1	Door guide right			

Preparation / Vorbereitung / Подготовка



Tools and materials required / Werkzeuge und Materialien benötigt / Необходимые инструменты и материалы (в комплект не входят)



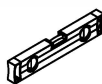
Drill
Bohrmaschine
Дрель



Screws
Schrauben
Саморезы



Screwdriver
Schraubendreher
Отвертка



Level
Level
Уровень



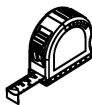
Precision knife
Schreibwaren Messer
Канцелярский нож



Silicone
Silikon
Силикон



Drill bits: 1/8", 3/16", 1/4"
*Masconry drill bits
Bohrer: 1/8", 3/16", 1/4"
*für die Steinmauer
Сверла: 1/8", 3/16", 1/4"
*Сверла для каменной стены



Measuring tape
Maßband
Рулетка



Set square
Anschlagwinkel
Угольник



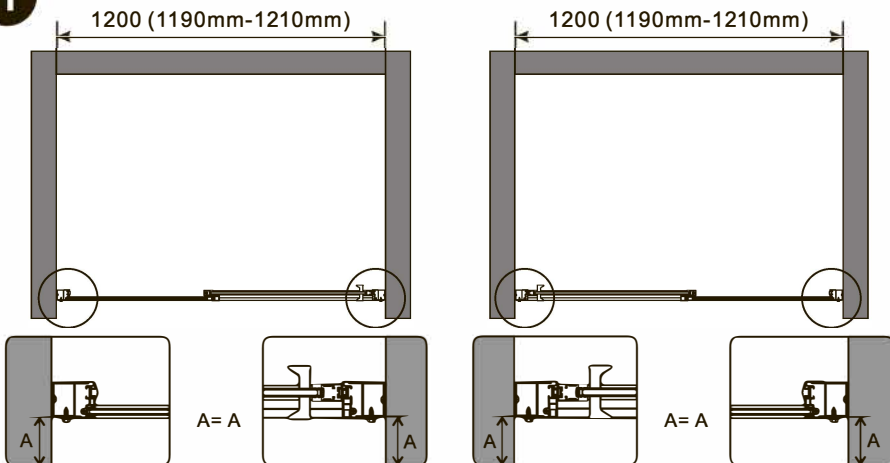
Pencil
Bleistift
Карандаш



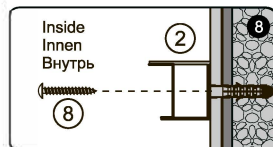
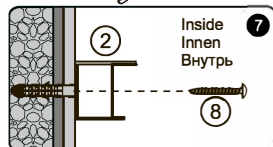
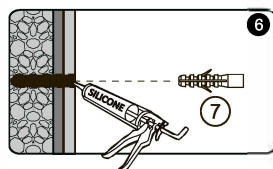
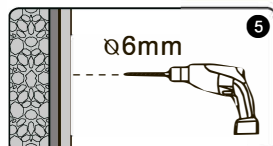
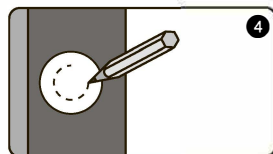
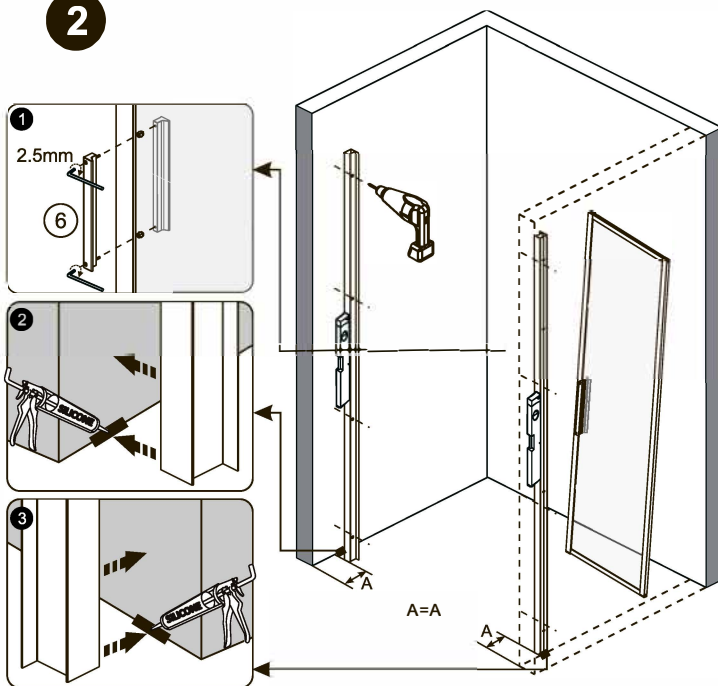
Mallet
Mallet
Деревянный молоток

Installation / Montage / Монтаж
 Lopaу 32S05L, Lopaу 32S05R

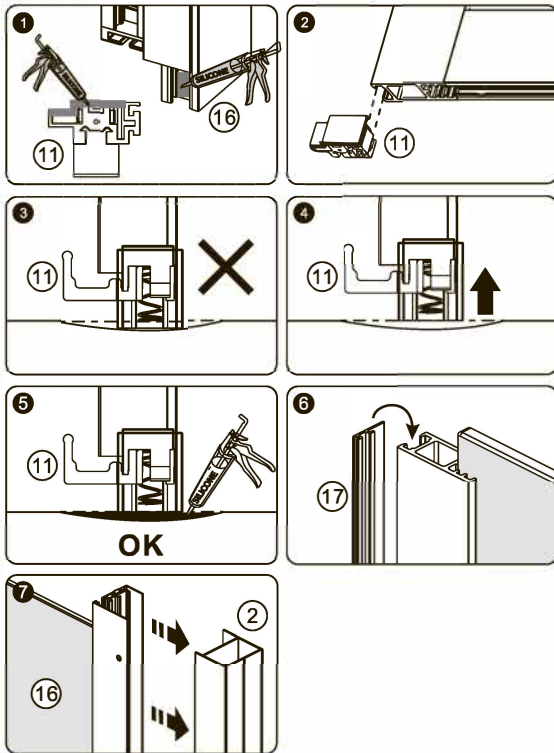
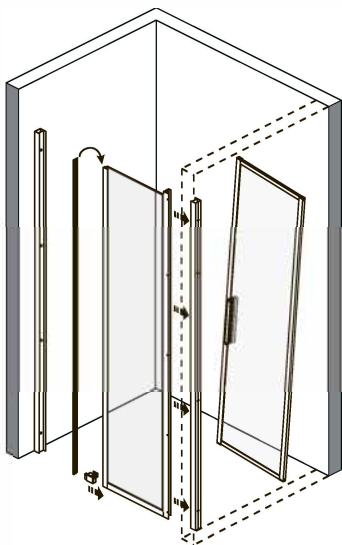
1



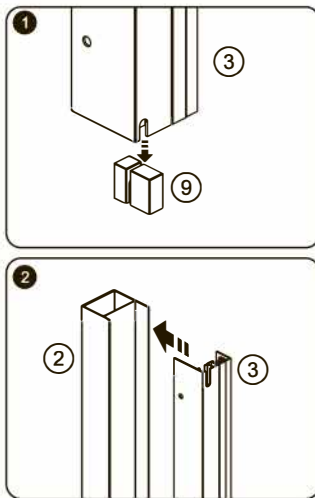
2



3

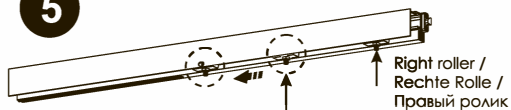


4



Installation / Montage / Монтаж
Lorau 32S05L, Lorau 32S05R

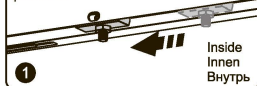
5



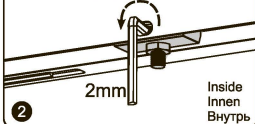
Left roller / Linke Rolle /
Левый ролик



1 Move the left roller to the center of the rail.
Die linke Rolle in die Mitte der Schiene bewegen.
Переместить левый ролик к центру рельса.



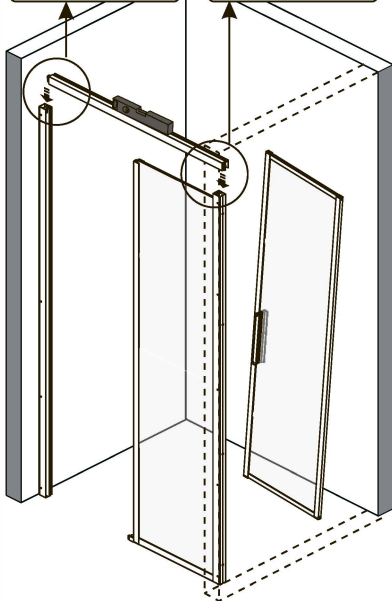
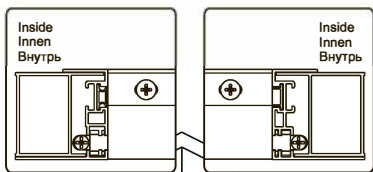
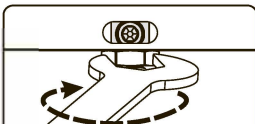
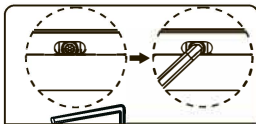
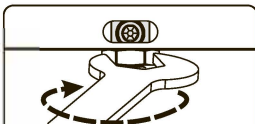
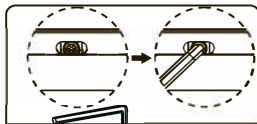
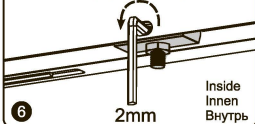
2 Turn 1/2 turn / Halbe Drehung /
Повернуть 1/2 оборота



5 Move the right roller to the center of the rail.
Die rechte Rolle in die Mitte der Schiene bewegen.
Переместить правый ролик к центру рельса.



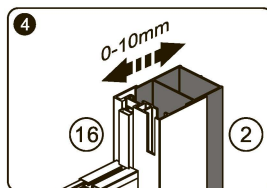
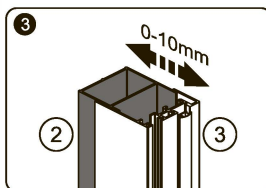
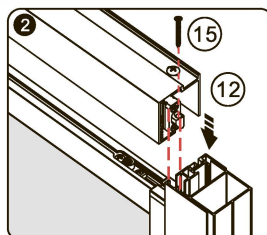
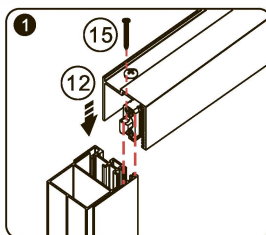
6 Turn 1/2 turn / Halbe Drehung /
Повернуть 1/2 оборота



6

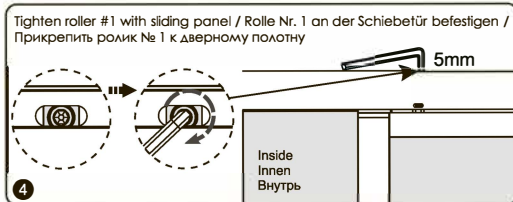
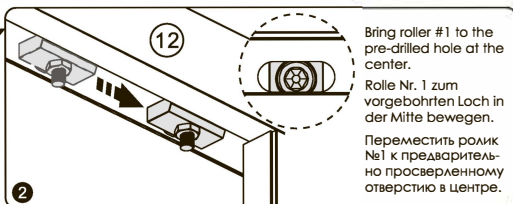
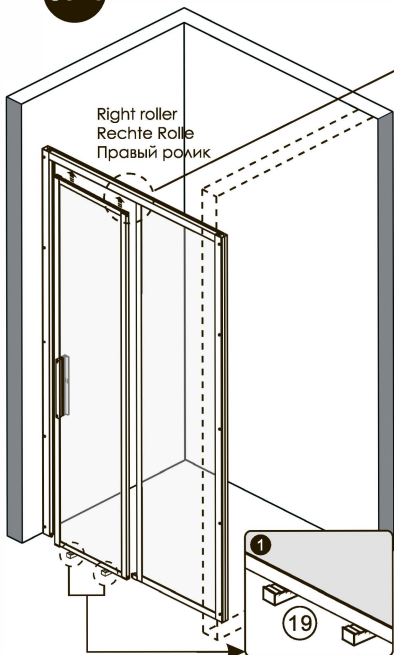
The adjustment on the wall profile must be made equally on both sides.
Die Einstellung am Wandprofil muss auf beiden Seiten gleichmäßig erfolgen.

Регулировка на профиле с креплением к стене должна выполняться одинаково с обеих сторон.

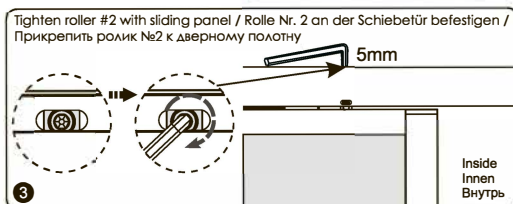
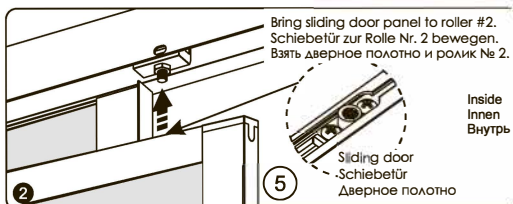
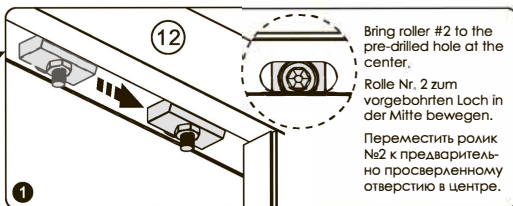
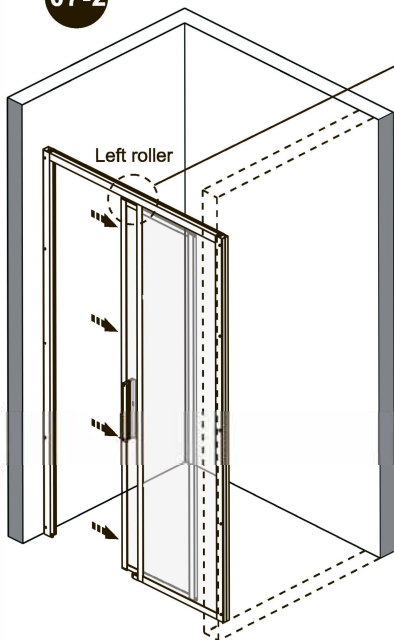


Installation / Montage / Монтаж
Lopau 32S05L, Lopau 32S05R

07-1

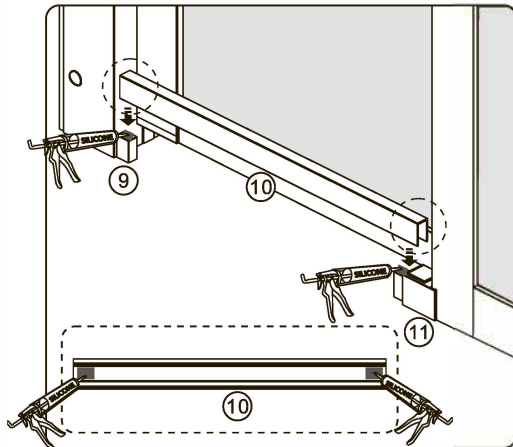
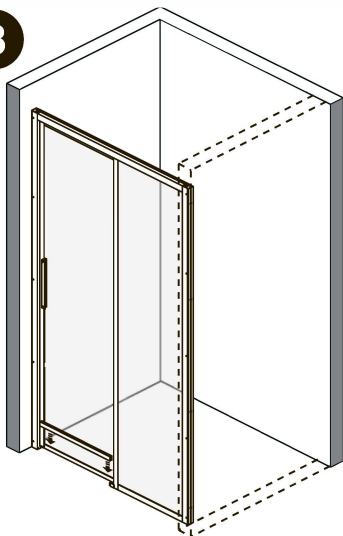


07-2

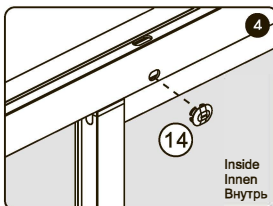
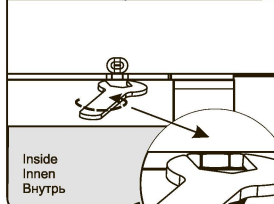
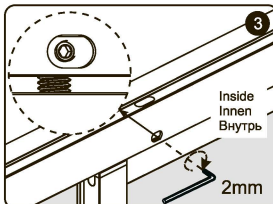
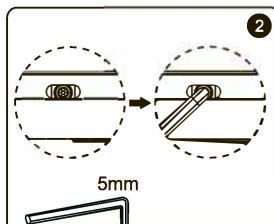
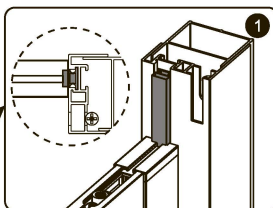
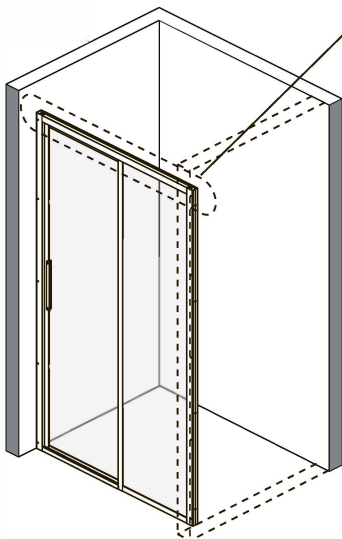


Installation / Montage / Монтаж
 Lорau 32S05L, Lорau 32S05R

8



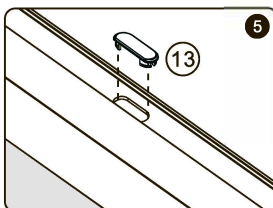
9



Insert Allen key into horizontal profile, to stop the screw from moving. Simultaneously, tighten the nut with the spanner.
 If impossible to adjust from this step, return to step 06 and adjust the top rail in the wall extrusions.

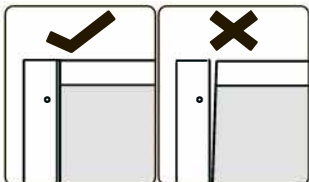
Den Inbusschlüssel in das horizontale Profil einführen, damit sich die Schraube nicht bewegt. Gleichzeitig die Mutter mit dem Schraubenschlüssel anziehen.

Wenn sich die Schiene in diesem Schritt nicht einstellen lässt, kehren Sie zurück zu Schritt 06 und passen die obere Schiene an den Wandprofilen an.

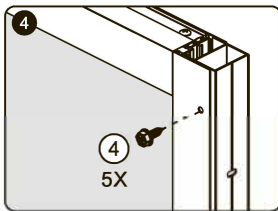
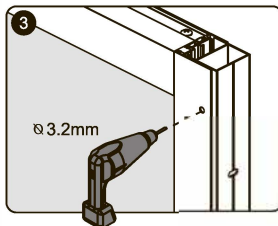
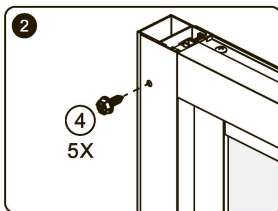
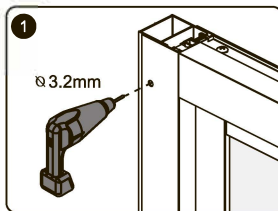
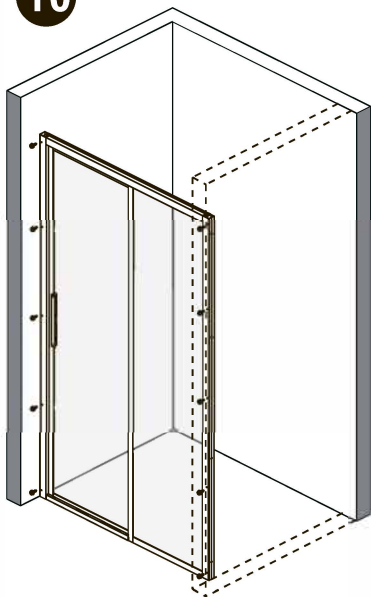


Зафиксировать винт в горизонтальном профиле с помощью шестигранного ключа. Одновременно закрутить гайку гаечным ключом.

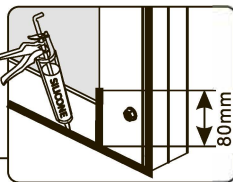
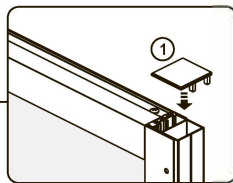
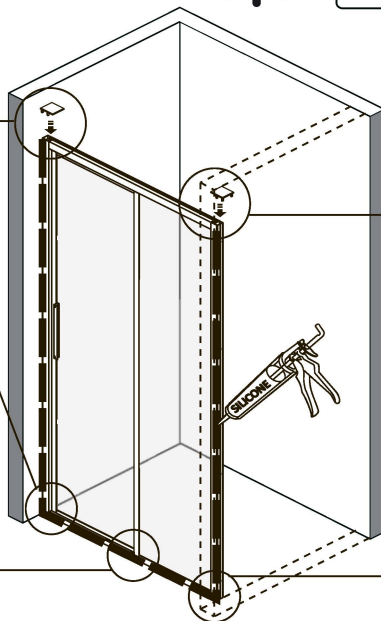
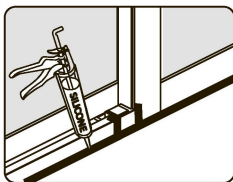
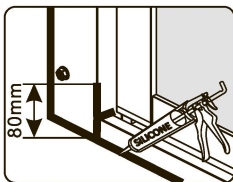
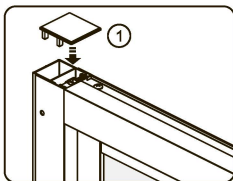
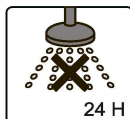
Если регулировка на этом этапе невозможна, вернуться к шагу № 6 и отрегулировать верхний рельс на настенном профиле.



10

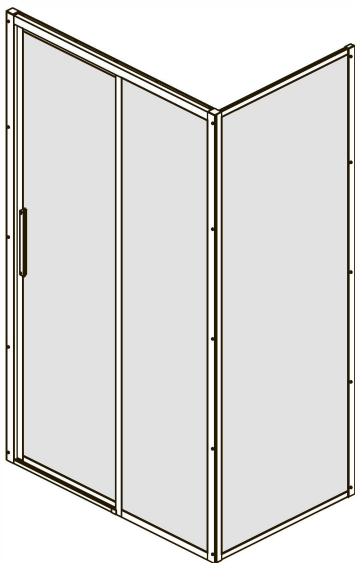


11

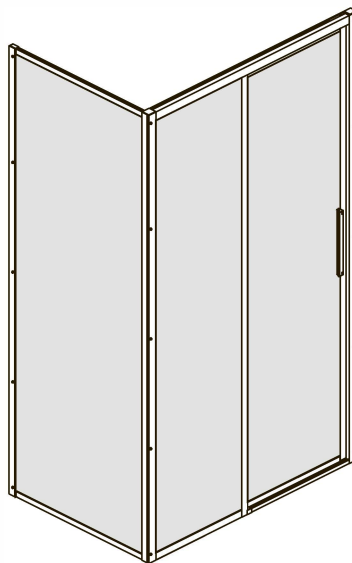




Lopau 32S07R, Lopau 32S07L
Video installation guide
Video-Montageanleitung
Видеоинструкция по монтажу

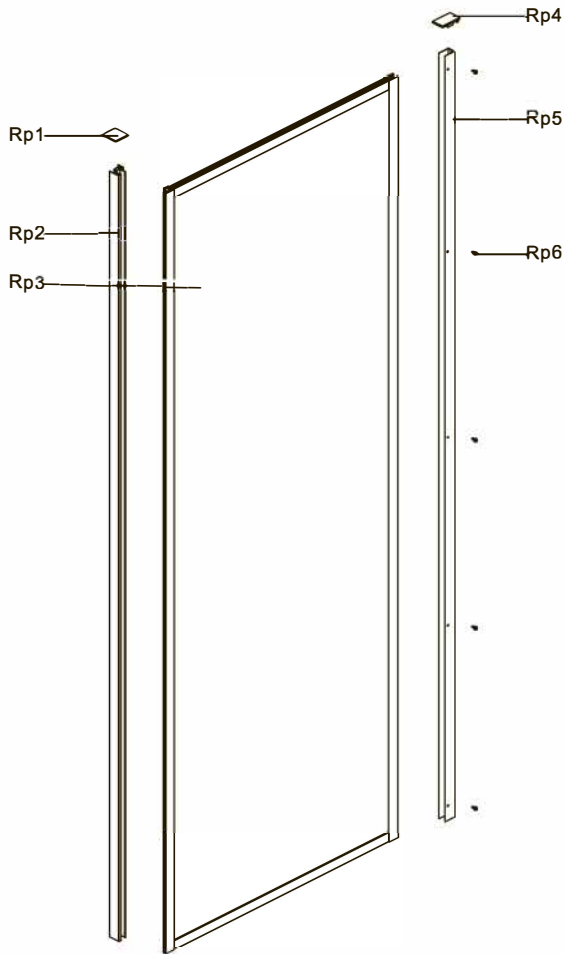


Lopau 32S07R



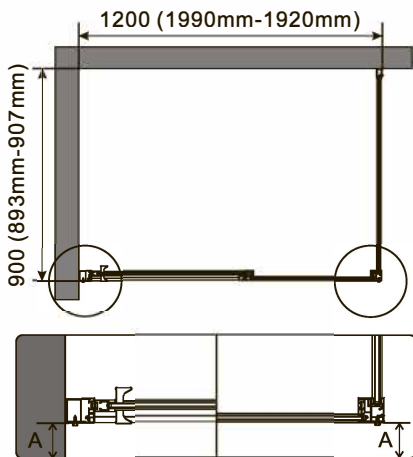
Lopau 32S07L

**Detailization / Details / В комплект входит
Lopau 32S07L, Lopau 32S07R**

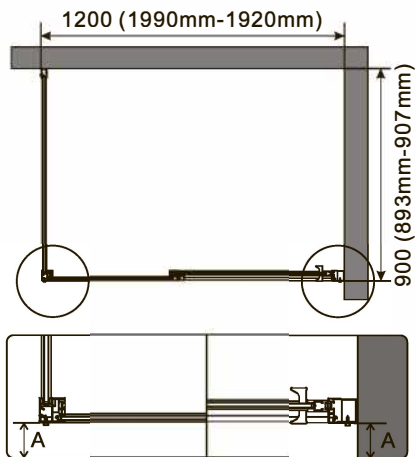


NO	Qty	Description	NO	Qty	Description
RP1	1	Cap for corner profile	RP4	1	Wall profile top cover
RP2	1	Corner profile	RP5	1	Wall profile
RP3	1	Fixed panel	RP6	5	Screw ST4X12

1

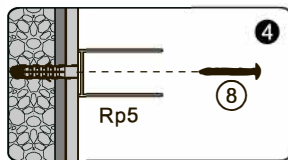
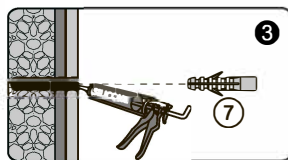
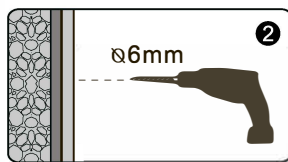
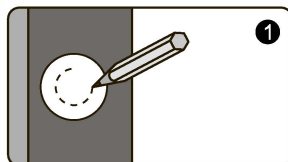
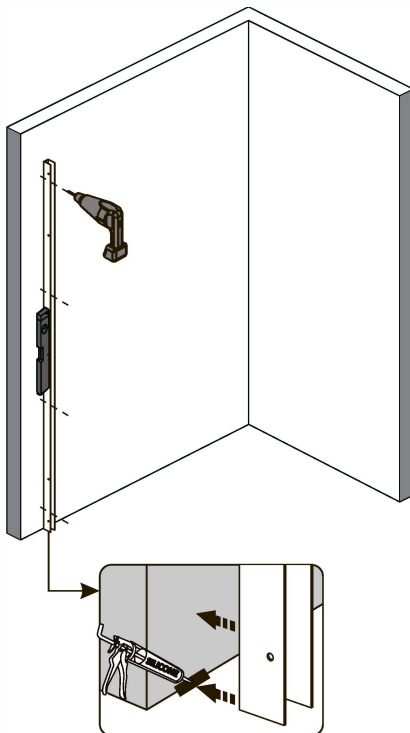


A=A

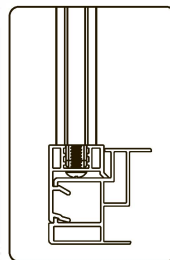
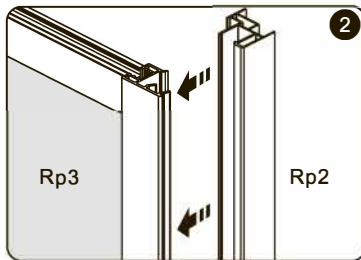
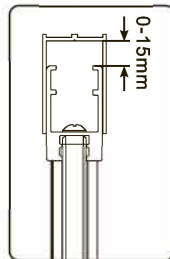
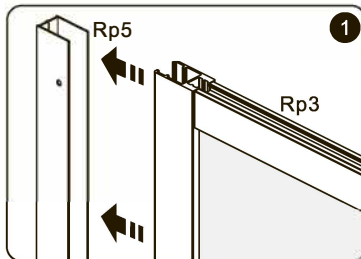
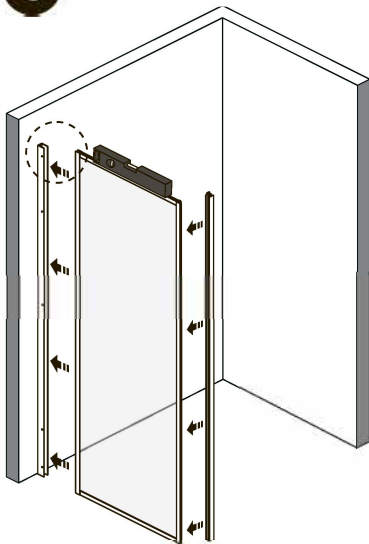


A=A

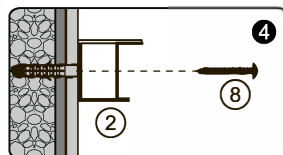
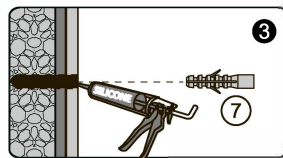
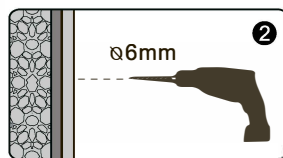
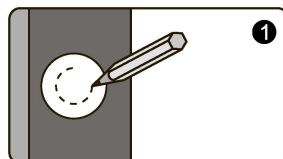
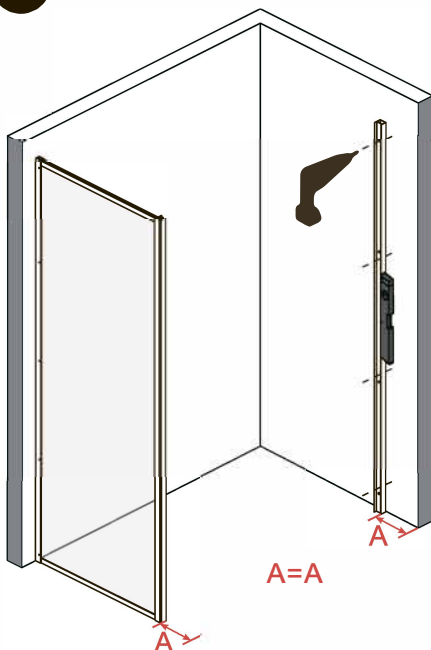
2



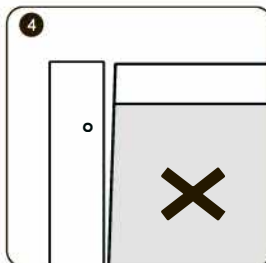
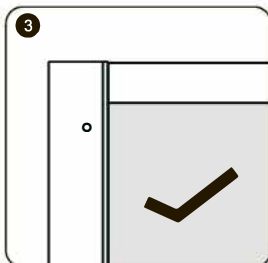
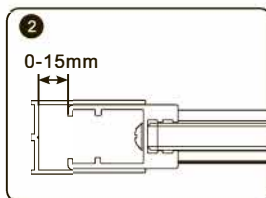
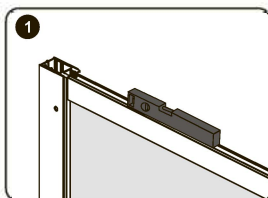
3



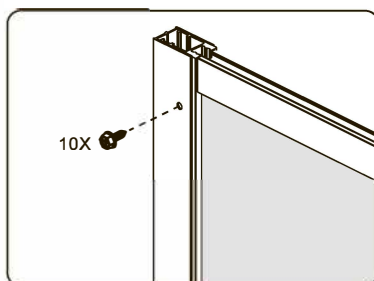
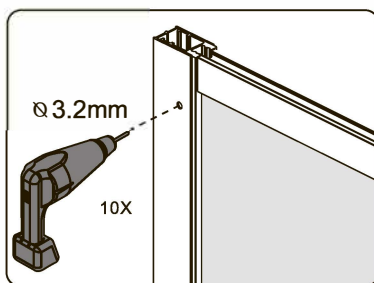
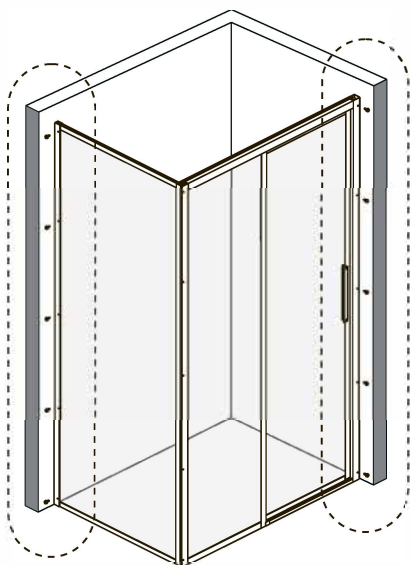
4



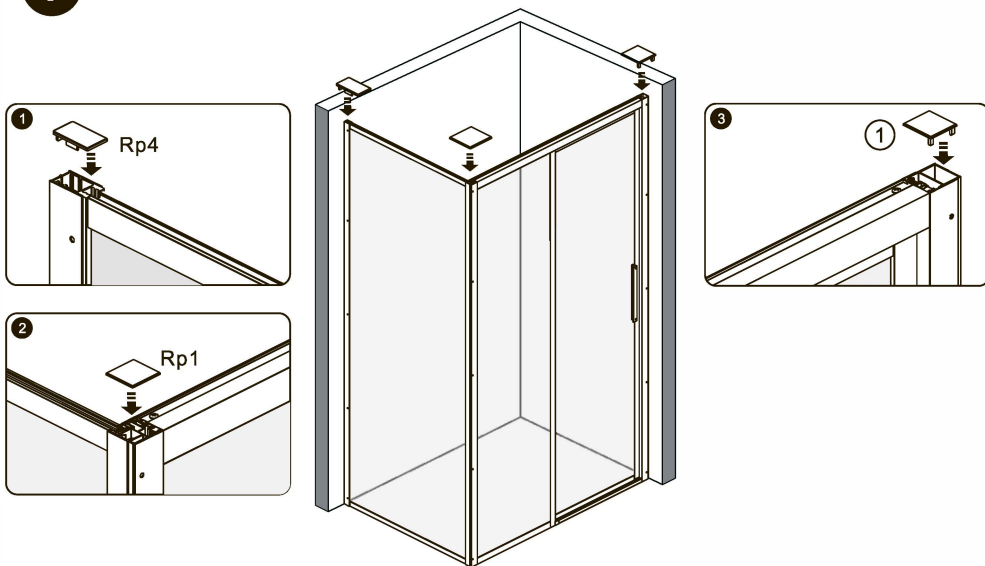
5



6



7



8

